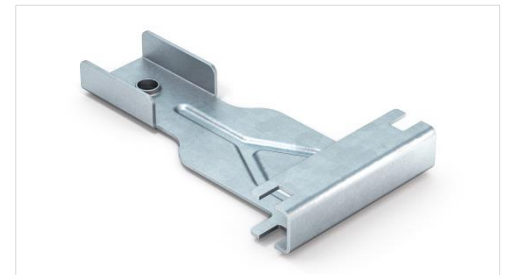


Quick hanger BA/BS

Product description:

The bracket is used for a quick mounting of drywall steel profiles BA 50 or BS 50 into a solid horizontal construction of the building. It is produced by compression molding of rolled galvanized metal sheet with thickness of 1.00 mm and single spring clip which is pressed and locked into the hanger. The installation is done by rotating the bracket into the profile and subsequent hanging on the suspension wire which allows a quick and easy leveling of the construction.



Range of usage:

The product is used for suspended ceiling construction created from metal profiles in the buildings.

Characteristics:

Material	Rolled sheet DX51
Coating	Zinc – min Z100 (ČSN EN 10327)
Thickness	1.00 mm (ČSN EN 10143)
Reaction to fire	Class A1 (EN 14195)
Durability	Class B
Hazardous substance	NPD

Product variability:

Code	Name	Load	Pack	Weight
TMD-4435	Quick hanger bracket BA 50/27 - rotary	0,40 kN	100 pcs	0,0336 kg
TMD-4437	Quick hanger no-spring BA 50/27 - rotary	0.40 kN	100 pcs	0,0261 kg
TMD-4436	Quick hanger bracket BS 50/27 - rotary	0.40 kN	100 pcs	0,0336 kg
TMD-4438	Quick hanger no-spring BS 50/27 - rotary	0.40 kN	100 pcs	0,0261 kg

Real weight may vary in range of +/-5% according to ČSN EN10143

Mounting:

First we anchor the suspension wire into a solid structure of the building. By pressing hanger spring together we line up the holes and slide hanger onto the wire in desired height. Profile is then mounted by rotating the hangers along the axis of the wire and locking it into the profile.

Packaging:

The connectors are packed by 100 pcs in carton box. Every dimension is labeled with identification tag.

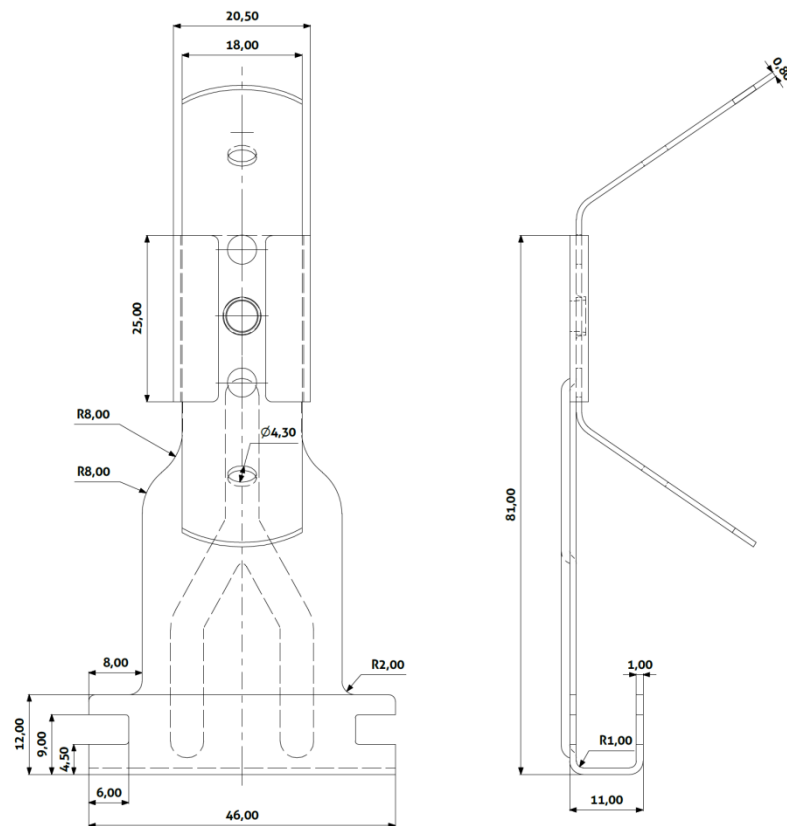


Quick hanger BA/BS

Recommended storage:

The product is required to store in dry and temperate environment in order to prevent condensation on the surface of the product and damage to the packaging.

Technical drawing:



BA

BS

